

Proposed Boundary Changes for Game Management Units 18, 19, and 21

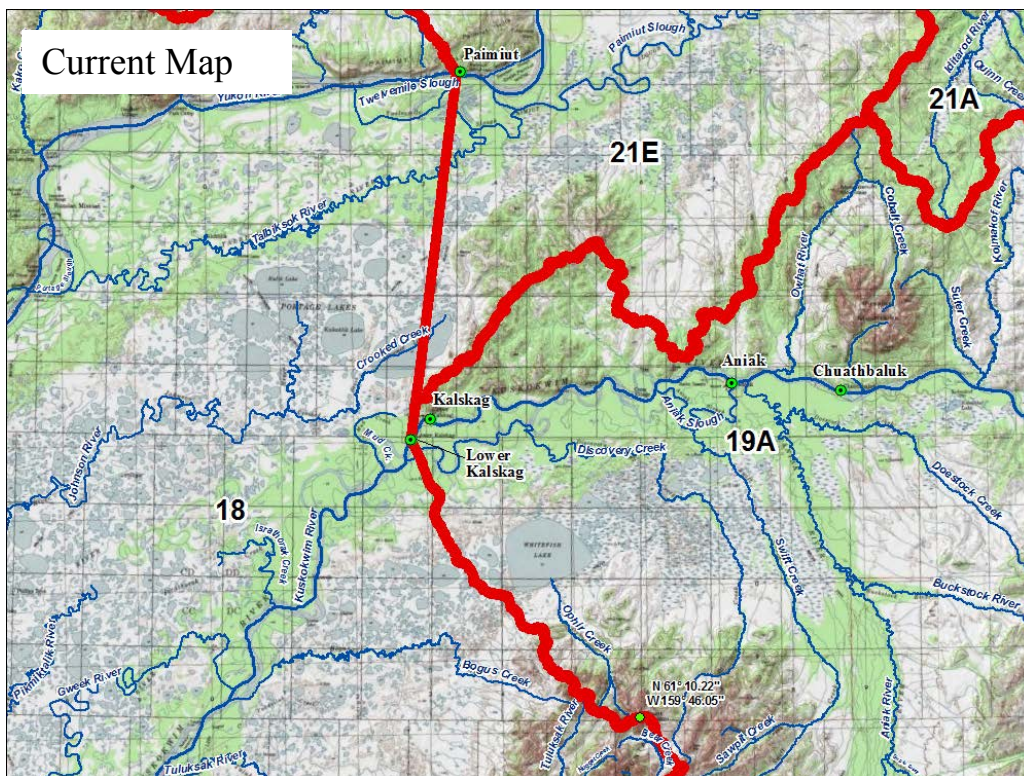
The Board of Game will consider a proposal (proposal 10) to change the boundary for Game Management Units 18, 19, and 21 at the Statewide Regulations meeting scheduled for March 2014. The following maps show the different options before the Board at this time. The public is encouraged to provide comments to the Board to help inform their decision. Color maps, the proposal, and other information are available online at: www.adfg.alaska.gov/index.cfm?adfg=gameboard.meetinginfo.

1. Current boundary map as printed in the hunting regulations

Unit 18 is defined as: “That area draining into the Yukon and Kuskokwim rivers downstream from a straight line drawn between Lower Kalskag and Paimiut and the drainages flowing into the Bering Sea from Cape Newenham on the south to and including the Pastolik River drainage on the north; Nunivak, St. Matthew, and adjacent islands between Cape Newenham and the Pastolik River and all seaward waters and lands within three (3) miles of these coastlines.”

Unit 19 is defined as: “All drainages into the Kuskokwim River upstream from a straight line drawn between Lower Kalskag and Paimiut.” [Note: This is slightly differently from the codified regulations, see codified regulations section below.]

Unit 21 is defined as: “Middle Yukon drainages into the Yukon River upstream from Paimiut to but not including the Tozitna River drainage on the north bank, and to but not including the Tanana River drainage on the south bank, and excluding the Koyukuk River drainage upstream from the Dulbi River drainage.” [Note: This is worded differently from the codified regulations, see codified regulations section below.]



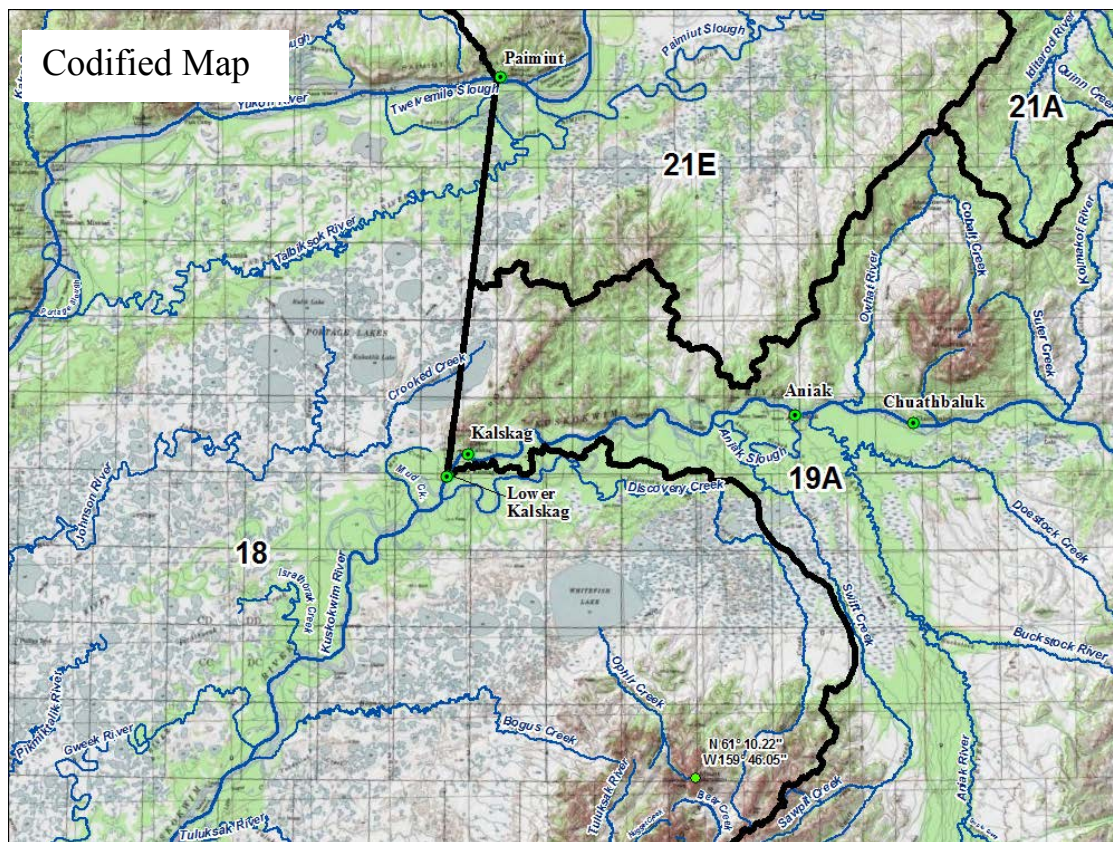
2. Boundary description in codified regulations (differs from printed map)

Game Management Unit 18 consists of that area draining into the Yukon and Kuskokwim Rivers downstream from a straight line drawn between Lower Kalskag and Paimiut and the drainages flowing into the Bering Sea from Cape Newenham on the south to and including the Pastolik River drainage on the north; Nunivak, St. Matthews, and adjacent islands between Cape Newenham and the Pastolik River, and all seaward waters and lands within three miles of these coastlines.

Game Management Unit 19 consists of the Kuskokwim River drainage upstream from Lower Kalskag [Note: This is slightly different from the hunting regulations booklet, see hunting regulations section above].

Unit 19(A) consists of the Kuskokwim River drainage downstream from and including the Moose Creek drainage on the north bank and downstream from and including the Stony River drainage on the south bank, excluding Unit 19(B).

Game Management Unit 21 consists of drainages into the Yukon River upstream from Paimiut to but not including the Tozitna River drainage on the north bank, and to but not including the Tanana River drainage on the south bank, and excluding the Koyukuk River drainage upstream from the Dulbi River drainage [Note: This is worded differently from the hunting regulations booklet, see hunting regulations section above].

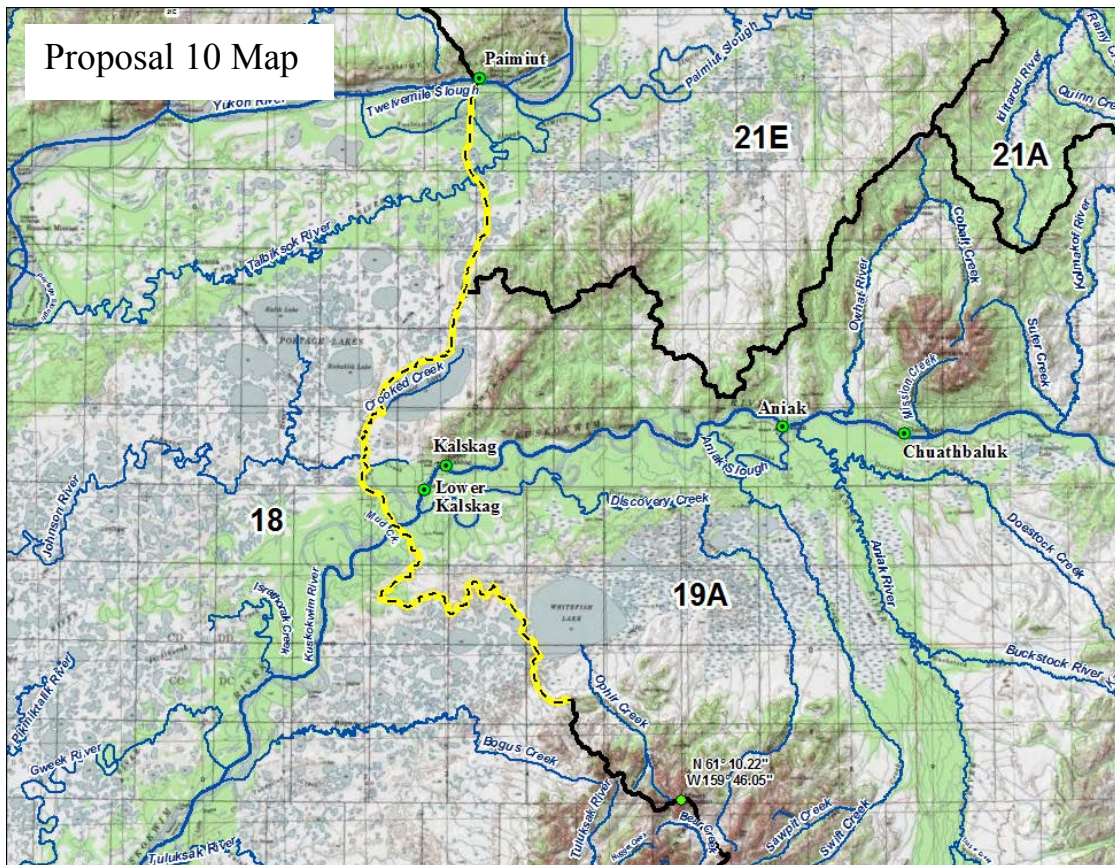


3. Proposal 10 boundary description

The area draining into the Yukon River downstream from a line starting at the down river boundary of Paimiut on the north bank of the Yukon River then across the river to the south bank to the northern terminus of the Paimiut Portage, proceed south through the Portage to the mouth of Hooking Creek on the northeast corner of Arhymot Lake, follow the northern and western bank of the lake to the head of Crooked Creek, follow the north bank of the creek downstream to the northern terminus of the Crooked Creek to Mud Creek Tramway, follow the tramway south to Mud Creek, follow its west bank downstream to First Slough, follow the west bank of the slough downstream to its confluence to the Kuskokwim River.

Use clearly visible land marks to create new language for Unit 19 to read: The area draining into the Kuskokwim River upstream from the confluence of the First Slough and the Kuskokwim River; and the area draining into Crook Creek's south bank upstream from the northern terminus of the Mud Creek to Crook Creek Portage Tramway.

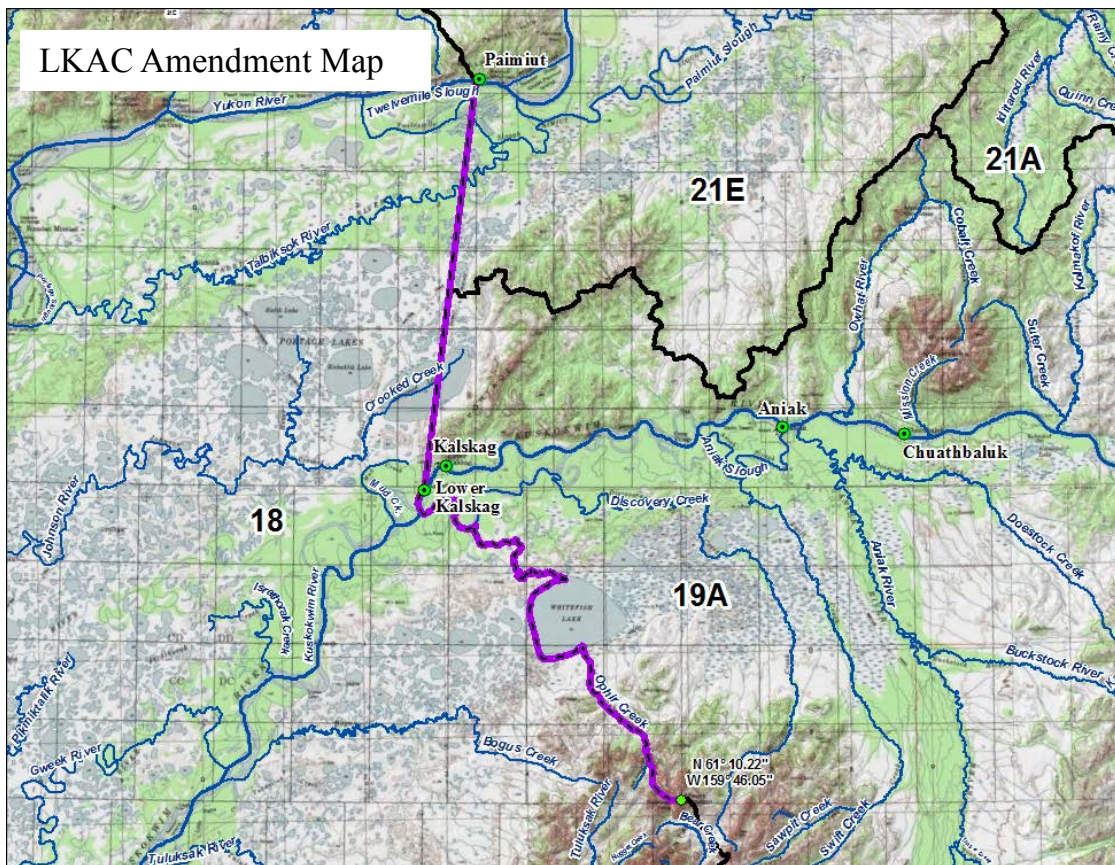
Use clearly visible land marks to create new language for Unit 21 to read: The area draining into the Yukon River upstream from the down river boundary of Paimiut on the north shore of the Yukon River and, directly across the river, the northern terminus of the Paimiut Portage on the south shore of the Yukon River.



4. Lower Kuskokwim AC (LKAC) amendment to proposal 10

Unit 18 is west of a straight line from Paimiut to Lower Kalskag, along the north bank of the Kuskokwim River downstream of a point directly across from the mouth of the old river, then following the south bank of the old river to Igyalleq Creek, up Igyalleq Creek to Whitefish Lake, along the west shore of Whitefish Lake to Ophir Creek and up Ophir Creek to the headwaters at N 61° 10.177' W 159° 46.507' [South of this lat/long point the boundary would follow the line shown in map #1].

The boundary between Units 19 and 21E would be the same as in codified regulation, map #2.



5. New route from Paimiut to Aniak Slough area, joining with portions of codified lines shown in map #2. (Map requested by the Board of Game)

Game Management Unit 18 consists of that area draining into the Yukon and Kuskokwim Rivers downstream from a line connecting Paimiut with the nearest hills to the southeast and then following drainage divides to the mouth of Aniak Slough and excluding the Swift Creek drainage; and the drainages flowing into the Bering Sea....

Game Management Unit 19 consists of the Kuskokwim River drainage, upriver of the mouth of Aniak Slough.

Game Management Unit 21E consists of the Yukon River drainages upstream from a line connecting Paimiut with the nearest hills to the southeast (new line on map #5).

